



APRIL
2017



100 Maple Ave
Rutland Ma.
01543
508-886-2492

Little Wonders Newsletter

Preschool Themes and Letter of the Week

April 3	April Showers Bring May Flowers	V
April 10	Farm Week	W
April 17	Taking Care of Our Earth	Review
April 24	Planting a Garden	Review



Reminders

Toddler Room Curriculum

- F - farm, fish, funny
- C - cow, color, cricket
- D - donkey, duck, dirt

Colors: **Orange** and **Brown**
Counting: 1 - 10

Highlights: We are singing, The Farmer in the Dell, Old McDonald and more. We are planting grass and watching it grow. Our sensory table will be filled with lots of items found on a farm: mud, water, and straw. And we will be dancing to the Bunny Hop and other fun songs.

The WRSD has a Half Day on Thursday, April 6th

Little Wonders will be closed Monday, April 17th in observance of Patriots' Day

The WRSD is closed for April Recess April 17 - 21

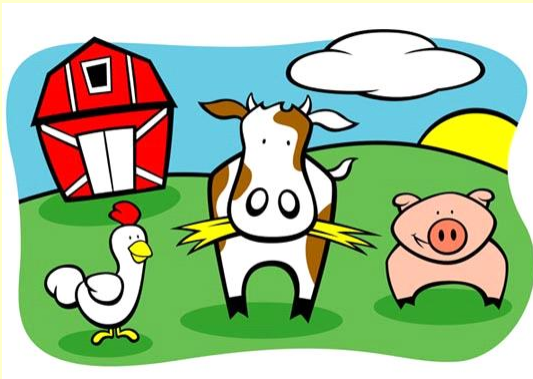
Heifer Farm Field Trip is Wednesday, April 26th.

The last day of school for the WRSD and the Morning Preschool Program (that follows the WRSD schedule, not the half day program) is Friday, June 23rd.



Kindergarten Orientation

Naquag Elementary School will host Kindergarten Orientation in May. If your child will attend the Half Day Kindergarten Program your Orientation Day is Wednesday, May 17th. If your child will attend the Full Day Kindergarten Program your Orientation Day is Friday, May 19th.



Kindergarten Screenings

Kindergarten screenings at Naquag are the week of June 5th. Naquag will contact parents with the date and time of their child's screening.

Our Curriculum is year-round!

At Little Wonders our Curriculum and care is year-round. We continue to provide a meaning curriculum that is enriching and fun in the summer. If your child has not signed up to attend Little Wonders in the summer and you are interested, please let us know!

This Month's Highlights

Egg Hunt

Tuesday, April 11th we will be hunting for eggs.

Pajama Day and Picnic

**Thursday, April 20th
Bring in your favorite stuffed animal. We will be making a picnic lunch so you do not have to pack a lunch.**

Earth Day – Saturday, April 22nd

We will explore the earth by investigating soil and seeds. We will be planting and watching our seeds grow.

Heifer Farm

We will visit Heifer Farm on Wednesday, April 26th. Please dress your child for the weather. Please have your child wear boots or sneakers.

Mud Season

Mud Season is here! Please continue sending in boots and winter weather outdoor clothes.

May/June - Upcoming

Muffins for Mom Friday, May 12th

Mothers' Day – Sunday, May 14th

Memorial Day - Monday, May 29th

Student Evaluations delivered in May

Kindergarten Bus Trip - June date TBD

Pre-K Graduation –Monday, June 12th at 10 AM

Spree day Wednesday, June 21st - All children are welcome!

Last day of the Morning Preschool Program and the WRSD – Friday June 23rd